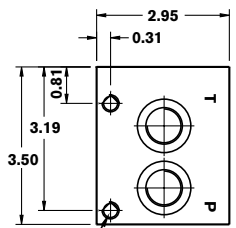
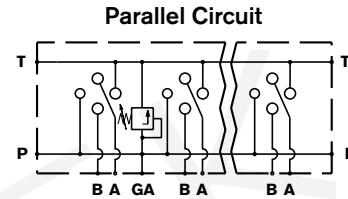
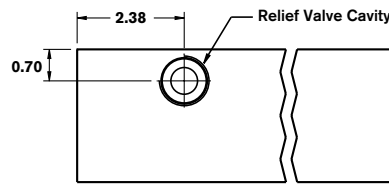
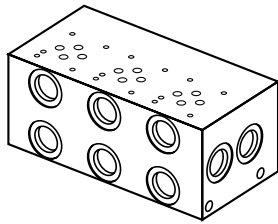


# Bar Manifold

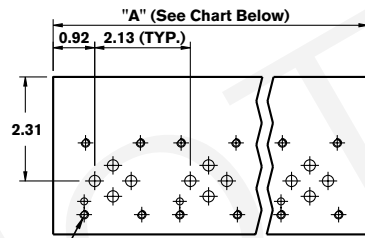
## D03 (Size 6) Parallel Circuit Normal Flow with DBDS Cavity

BM6PND	- XX /		2 -	RCR
--------	--------	--	-----	-----

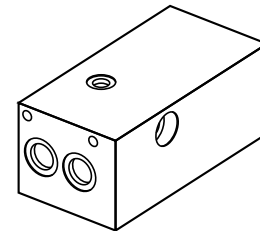
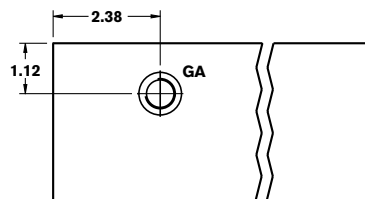
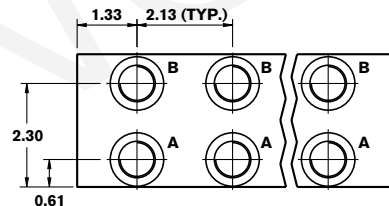
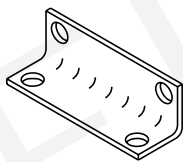
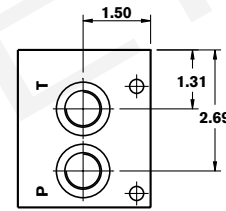
Revision	= XX	RCR =	Relief Cavity DBDS6
Number of Station	= 01-08	12 =	SAE Threaded Ports
Material	= A	01 =	BSPB Threaded Ports
Aluminum 6061-T6, 3000 psi			
Carbon Steel <sup>1</sup> 45#, 5800psi	= S		
Valve Spacing 2.13"	= 2		



See Chart Below



See Chart Below



	P & T Port	A & B Ports	GA Port	Manifold (Mtg.)	Valve (Mtg.)
...12	7/8-14 SAE-10	3/4-16 SAE-8	9/16-18 SAE-6	5/16-18 x 0.60 DP.	10-24 x 0.45 DP.
...01	1/2" BSPB	3/8" BSPB	1/4" BSPB	M8 x 0.60 DP.	M5 x 0.45 DP.

Number of Stations	01	02	03	04	05	06	07	08
Dim. "A"	3.95	4.88	7.00	9.12	11.25	13.38	15.50	17.63
Approx. Weight AL (lbs)	4	5	7	9	11	14	16	18
Approx. Weight DI (lbs)	11	13	19	24	30	36	42	48

1) Blackening

All dimensions in inches