

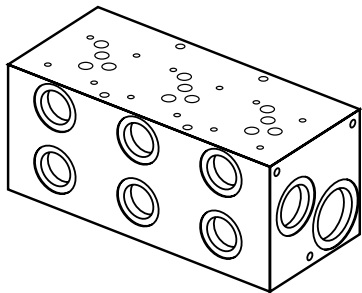
# Bar Manifold

## D05 (Size 10) Parallel Circuit Ultra High Flow

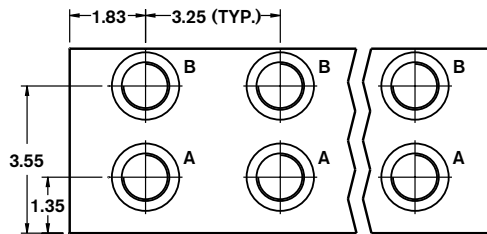
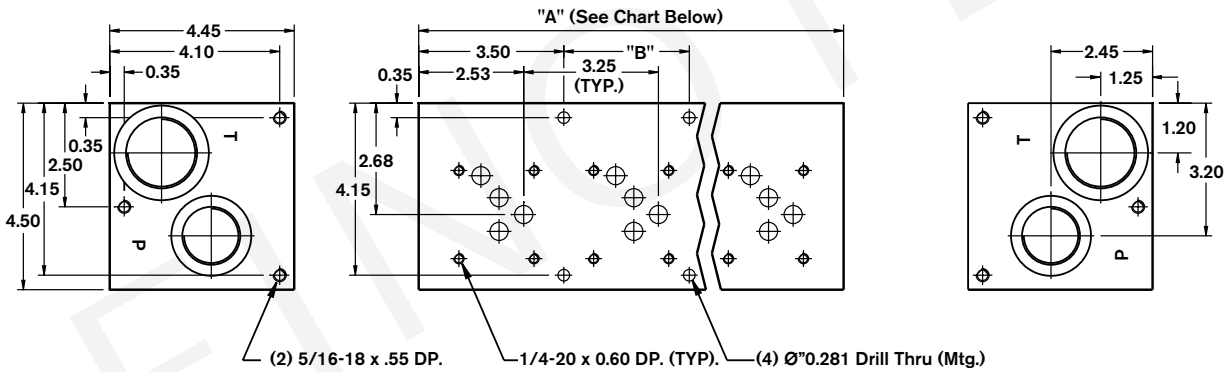
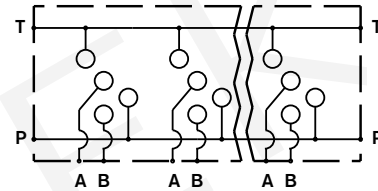
**BM10PU - XX / S 3 -**

Revision	= XX	12 =
Number of Station	= 02-06	
Material	= S	
Valve Spacing 3.25"	= 3	

SAE Threaded Ports		
T:	1 5/8-12	SAE-20
P:	1 5/16-12	SAE-16
A&B:	1 1/16-12	SAE-12



Parallel Circuit



Mounting kit not included.

Number of Stations	02	03	04	05	06
Dim. "A"	7.00	10.25	13.50	16.75	20.00
Dim. "B"	—	3.25	6.50	9.75	13.00
Approx. Weight DI (lbs)	36	53	70	87	104

1) Blackening

All dimensions in inches