

型号Z2S系列为叠加式液控单向阀，用于关闭一个或二个工作油口，无泄漏且稳定性好。

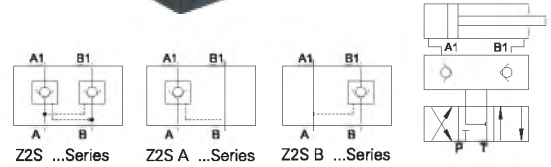
特性：

1. 一个或二个工作油口可选用
2. 适用垂直叠装

Model Z2S series are pilot operated check valves by a sandwich plate mounting.

Characteristic:

1. One or two service ports for leak free closure, optional
2. Vertical stacking assemblies
3. Different opening pressures as required



FT - Z2S 6 50 / *

口径 Size 6, 10

无标记 = A & B 腔带单向阀
A = A 腔带单向阀
B = B 腔带单向阀

No code = A & B with check assembly
A = A with check assembly
B = B with check assembly

其它文字说明
Further details

无标记 = 丁腈橡胶密封
V = 氟橡胶密封

No code = NBR seals for petroleum oils
V = FPM seals for phosphate ester

系列号 Series no.

General information 基本参数		6	10	16	22
口径 Size		6	10	16	22
开启压力 Opening Pressure (MPa)		0.15	0.1	0.1	0.25
流量 Flow rate (L/min)		50	80	200	300
工作环境温度 Fluid Temperature for NBR seal (°C)		-20~80			

注：Z2S安装尺寸见第15页

Note: Please check page 15 for Z2S installation dimensions