

型号DV/DRV/DVP/DRVP系列为节流阀和单向节流阀，用于精确调节执行元件速度的流量控制阀，当关闭时可用作截止阀。

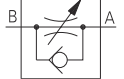
特性:

1. 螺纹式安装
2. 九种规格可选

Model DV/DRV/DVP/DRVP series are throttle and throttle check valves used to restrict the flow, it is used as a shut valve when completed closed.

Characteristic:

1. For in-line and subplate mounting
2. One direction with leak-free closure with DRV, DRVP series
3. Throttle and throttle check valve, optional



DRV Series
DRVP Series

其它文字说明
Further details

无 = 英制; 2 = 公制
No code = Inch; 2 = Metric

无标记 = 丁腈橡胶密封
V = 氟橡胶密封

No code = NBR seals for petroleum oils
V = FPM seals for phosphate ester

系列号
Series no.

- DV = 节流截止阀
- DRV = 单向节流截止阀
- DVP = 板式节流截止阀
- DRVP = 单向板式节流截止阀
- DV = Throttle shut-off valve
- DRV = Throttle check shut-off valve
- DVP = Throttle shut-off valve, subplate mounting
- DRVP = Throttle check shut-off valve, subplate mounting

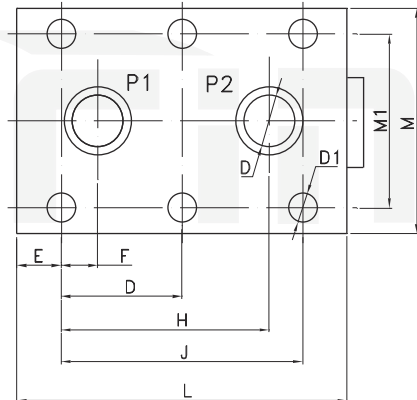
通径 Size 6, 8, 10, 12, 16, 20, 25, 30, 40

无标记 = 管式安装 No code = Threaded connection
S = 面板安装 S = Subplate mounting

1 = 钢, 2 = 铜, 3 = 不锈钢
1 = Steel, 2 = Brass, 3 = Stainless steel

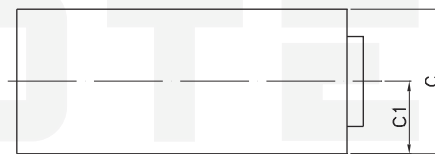
FT - DRV 16 - 1 50 / *

General information 基本参数									
通径 Size	6	8	10	12	16	20	25	30	40
DV, DRV 英制螺纹 (Inch Thread)	G1/8	G1/4	G3/8	G1/2	G3/4	G1	G1 1/4	G1 1/2	G2
DV, DRV 公制螺纹 (Metric Thread)	M10X1	M14X1.5	M18X1.5	M22X1.5	M27X2	M33X2	M42X2	M48X2	M60X2
管式面板安装 Panel Connection	M22X1.5	M22X1.5	M22X1.5	M22X1.5	M22X1.5	M33X2	M33X2	M33X2	M33X2
流量 Flow Rate (L/min)	16	24	35	45	60	100	150	210	375
最大工作压力 Max. Operating Pressure (MPa)	35								
单向阀开启压力 Opening Pressure of Check Valve (MPa)	0.05								
油液粘度 Fluid Viscosity (mm ² /s)	2.8—500								



DRVP Installation dimensions

安装尺寸



Size 通径	M	M1	L	J	H	D	F	E	C1	C	D	D1
DRVP6	41.5	28.5	41.5	19	17.6	-	1.6	6.4	8	16	2x φ 5	4xM6
DRVP8	46	33.5	63.5	35	30	-	4.5	14.2	10	20	2x φ 7	4xM6
DRVP10	51	38	70	33.5	29.5	-	4	18	12.5	25	2x φ 10	4xM6
DRVP12	57.5	44.5	80	38	34	-	4	21	16	32	2x φ 13	4xM6
DRVP16	70	54	104	76	65.4	38	11.4	14	22.5	45	2x φ 17	6xM8
DRVP20	76.5	60	127	95	76	47.5	19	16	25	50	2x φ 22	6xM8
DRVP25	100	76	165	120	100.1	60	20.6	15	27.5	55	2x φ 28.5	6xM10
DRVP30	115	92	186	143	118.8	71.5	23.8	15	37.5	75	2x φ 35	6xM12
DRVP40	140	111	192	133.5	114.5	67	25.5	16	50	100	2x φ 47.5	6xM12