

型号 DB/DBW系列为先导式溢流阀，用来限制系统压力，同时可依靠安装电磁阀卸荷。

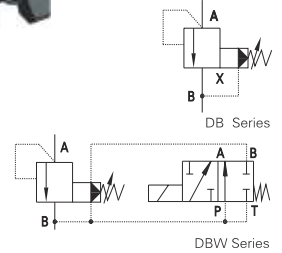
特性:

1. 不同连接方式可选: 板式, 管式
2. 调节压力可以调节手柄实现
3. 带电磁铁可选

Model DB / DBW series are pilot operated pressure relief valves, it can limit the max. operating pressure in a main system, and unload the system pressure if add the solenoid valve. The threaded in line or subplate mounting can be chosen optional.

Characteristic:

1. Different mounting styles, threaded and subplate mounting, optional
2. Handwheel adjustment style available
3. Directional control valve, optional



FT – DB W 10 B H – 30 / 10 G24 N Z5L

无标记 = 无电磁阀
W = 带电磁阀
No code = Without directional valve
W = With directional valve

直径
底板安装: 10, 20, 30
螺纹式安装: 10, 15, 20, 25, 30
Size
Subplate mounting: 10, 20 30
Threaded connection: 10, 15, 20, 25, 30

A = 常闭 A = Normal closed
B = 常开 B = Normal open

无标记 = 底板安装 No code = Subplate mounting
G = 螺纹连接 G = Thread connection

H = 调节手柄 H = Hand wheel
S = 带保护罩的调节手柄 S = Screw adjustment and protective cap

系列号 Series number: 30 / 5X

设定压力 Settable pressure up to :
5 = 5 Mpa
10 = 10 Mpa
20 = 20 Mpa
31.5 = 31.5 Mpa
35 = 35 Mpa

无标记 = 丁腈橡胶密封
V = 氟橡胶密封
No code = NBR seals for petroleum oils
V = FPM seals for phosphate ester

No code = Inch thread 无标记 = 英制螺纹
2 = Metric thread 2 = 公制螺纹

Z4 = Angled plug connector(s) Z4 = 方型插头
Z5L = Angled plug and light(s) Z5L = 方型带灯插头

N = With manual override(s) N = 带手动按钮
No code = Without manual override 无标记 = 不带按钮

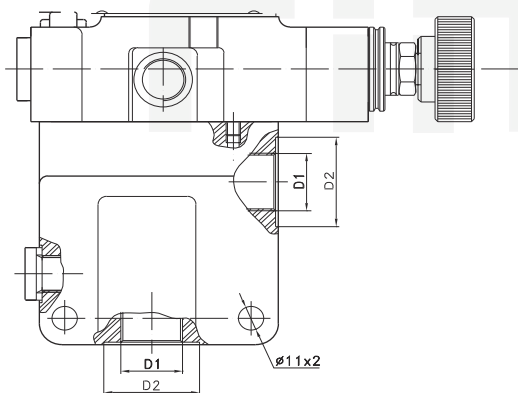
G24 = 直流24V; G12 = 直流12V
W220 = 交流220V; W110 = 交流110V
G24 = DC24V; G12 = DC12V (Direct current)
W220 = AC220V; W110 = AC110V (Alternating current)

No code = Standard 无标记 = 标准型
U = With min. opening pressure U = 较低开启压力

General information 基本参数	10		20		30	
	30	5X	30	5X	30	5X
口径 Size	30	5X	30	5X	30	5X
工作压力 Max. Operating Pressure (Mpa)	31.5	35	31.5	35	31.5	35
流量 Max. Flow Rate (L/min.)	200	250	400	500	600	650
介质温度 Medium Temperature (°C)	-20 ~ 70					

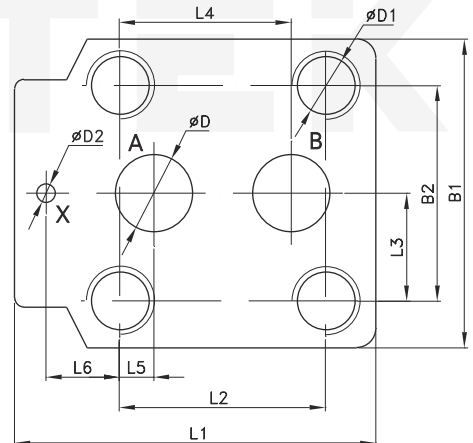
DB...G Installation dimensions

安装尺寸



安装尺寸

DB / DBW Installation dimensions



Size 口径	D1		D2
	Metric 公制	Inch (BSP) 英制	
DB10G	M18 x 1.5	G 1/2	34
DB15G	M27 x 2	G 3/4	42
DB20G	M33 x 2	G 1	47
DB25G	M42 x 2	G 1 1/4	58
DB30G	M48 x 2	G 1 1/2	65

Size 口径	L1	L2	L3	L4	L5	L6	B1	B2	D	D1	D2
DB/DBW 10	91	53.8	27	47.5	22.1	0	78	53.8	12	M12	6
DB/DBW 20	116	66.7	34.9	55.6	11.1	23.8	100	70	25	M16	6
DB/DBW 30	148	88.9	41.25	76.2	12.7	31.8	115	82.6	32	M18	8