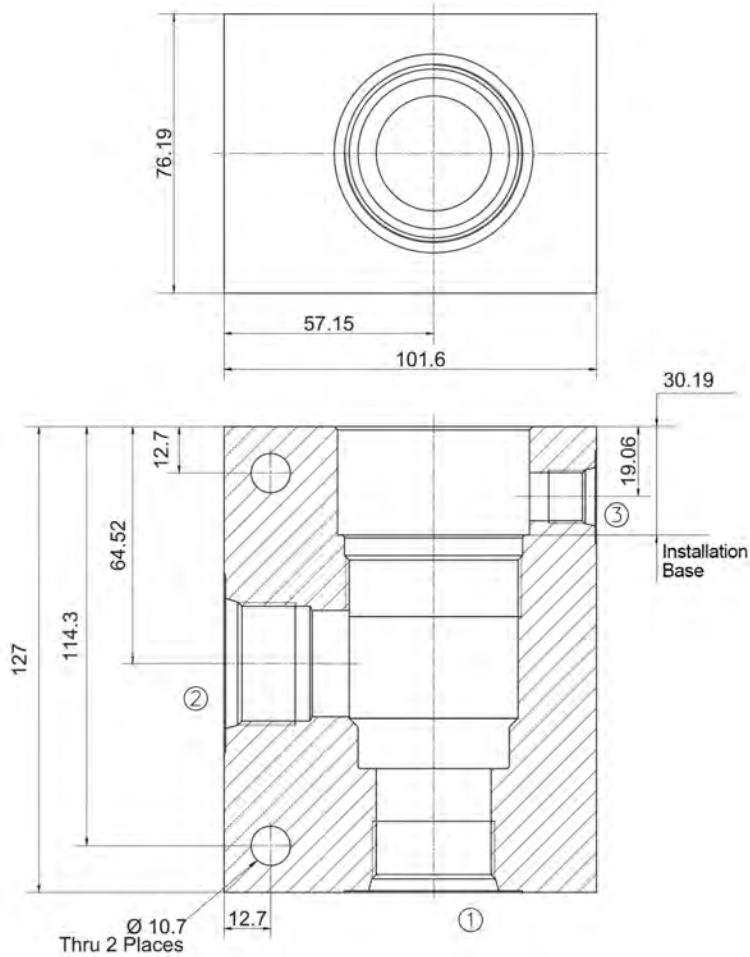


Cartridge Valve Housing



Series T-19A Housing



Unit=Millimeters

Series CBT-6 (T-19A) Housings

Part No.	Ports 1 & 2	Port 3
LKCE	1 " NPTF	1/4" NPTF
LKCF	1 1/4" NPTF	1/4" NPTF
LKCM	SAE 16	SAE 6
LKCN	SAE 20	SAE 6
LKCX	G 1	G 1/4
LKCY	G 1 1/4	G 1/4

Material	Operating Pressure	Part No.
Aluminum,6061-T6	210 bar (3000 psi)	****
Steel	350 bar (5000 psi)	****-s