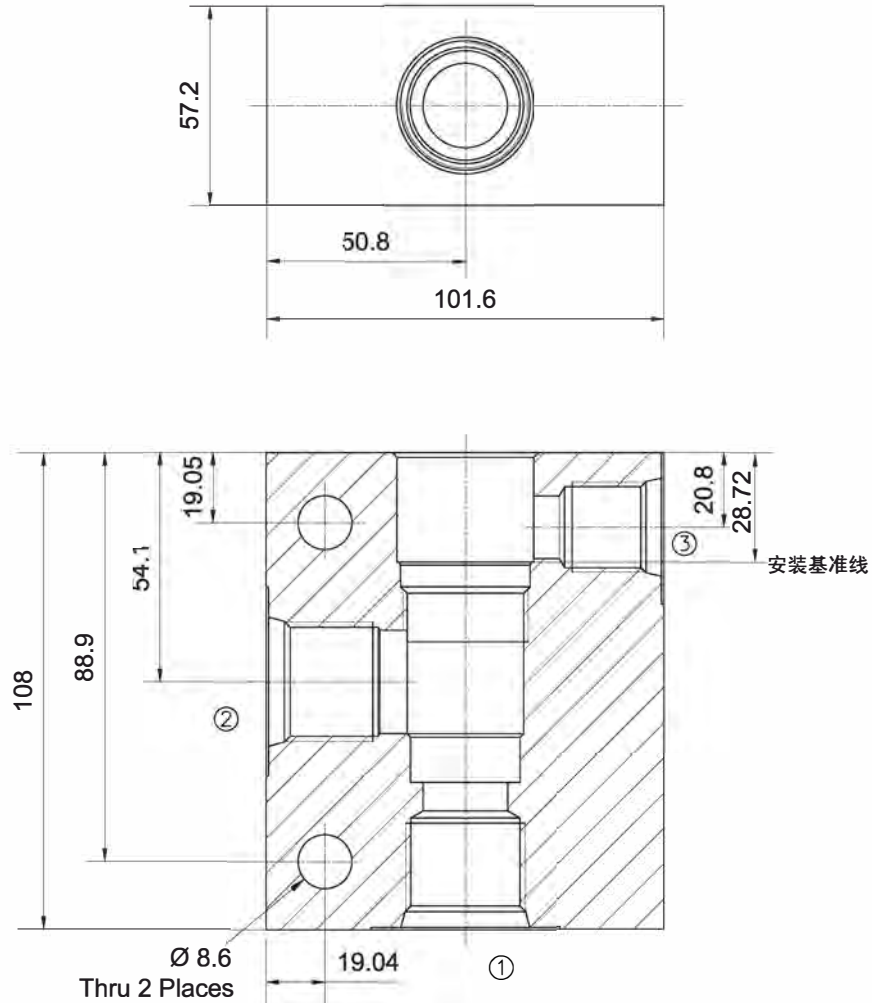


# Cartridge Valve Housing



## Series T-17A Housing



Unit=Millimeters

| Part No. | Ports 1 & 2 | Port 3    |
|----------|-------------|-----------|
| LHCD     | 3/4" NPTF   | 1/4" NPTF |
| LHCE     | 1" NPTF     | 1/4" NPTF |
| LHCF     | 1 1/4" NPTF | 1/4" NPTF |
| LHCL     | SAE 12      | SAE 6     |
| LHCM     | SAE 16      | SAE 6     |
| LHCN     | SAE 20      | SAE 6     |
| LHCW     | G 3/4       | G 1/4     |
| LHCX     | G 1         | G 1/4     |
| LHCY     | G 1 1/4     | G 1/4     |

| Material         | Operating Pressure | Part No. |
|------------------|--------------------|----------|
| Aluminum,6061-T6 | 210 bar (3000 psi) | ****     |
| Steel            | 350 bar (5000 psi) | ****-S   |