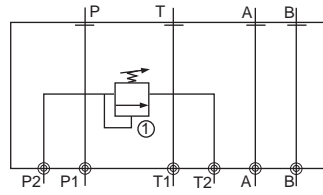
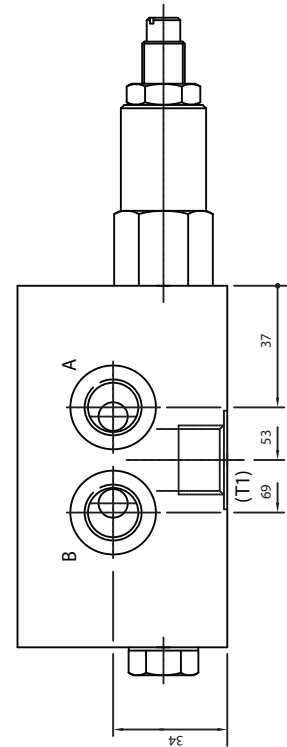
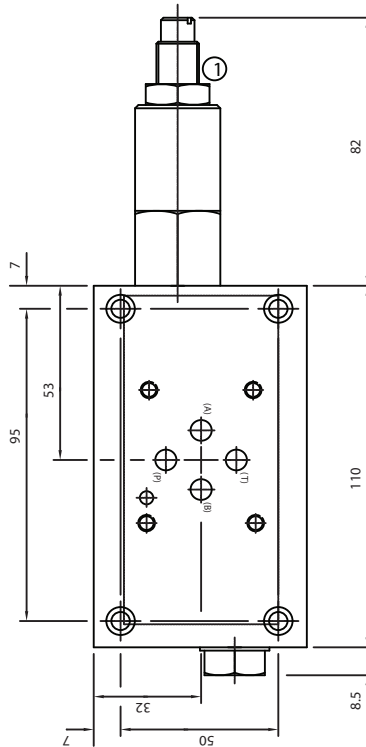
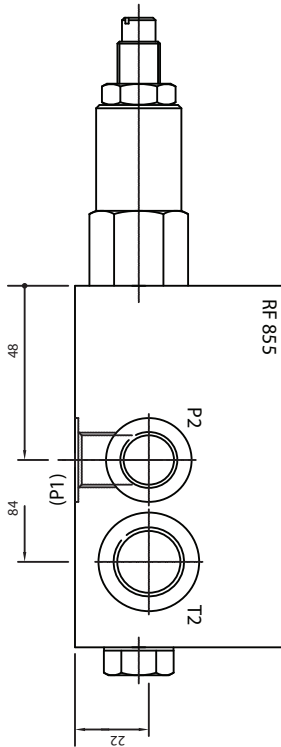


Features:

- Cetop 3 single-station side and rear entry relief sub plate.
- Material; aluminum or steel
- Max. Working pressure; 210 bar.
- 'P', 'T', 'A' and 'B' ports = 3/8" B.S.P. female.



Dimensions:



Model code

FT-MB6R	B	S
---------	---	---

Product type

Manifold material:

- A = Aluminum
- S = steel

Port sizes:

- P1, P2 - 3/8" BSP
- T1, T2 - 1/2" BSP
- A, B - 3/8" BSP
- RV Adj. Range: 3 - 210 Bar

