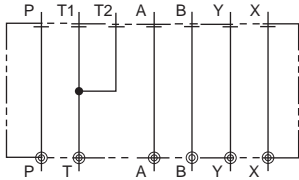


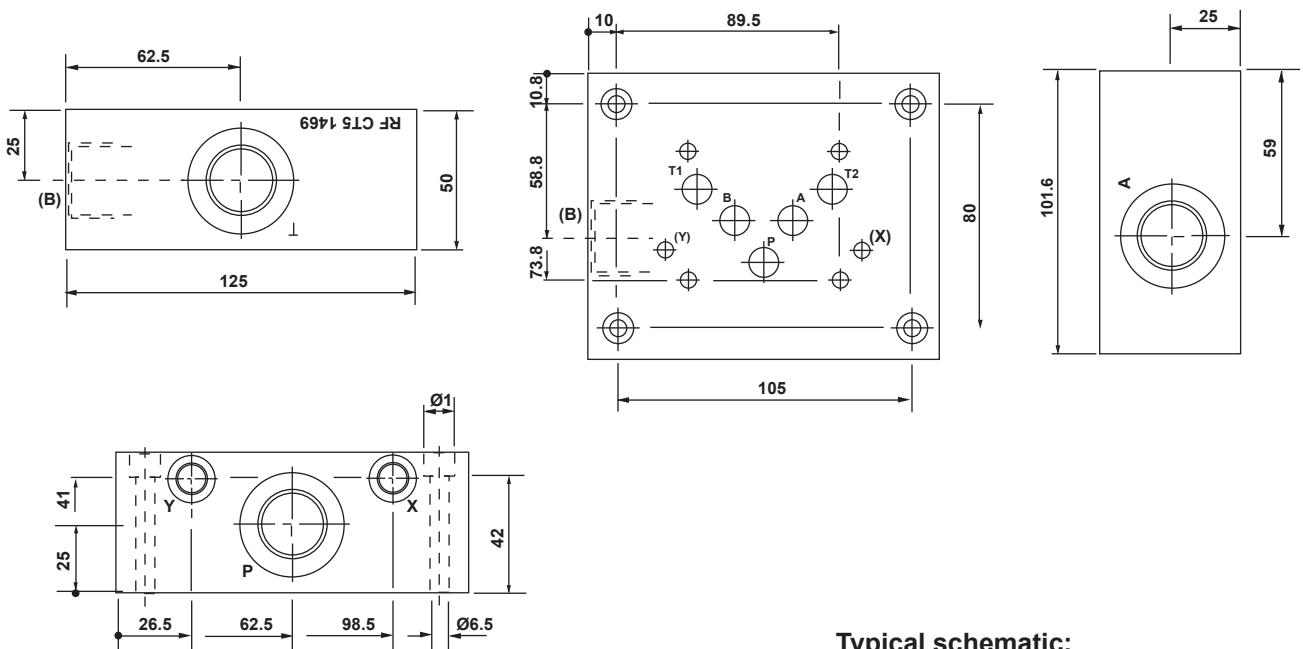
Features:

- Cetop 5 single-station side entry sideplate.
- Material; steel.
- Working pressure; 315 bar.
- 'P', 'T' ports = 3/4" B.S.P. female.
- 'A', 'B' ports = 3/4" B.S.P. female.
- 'X' and 'Y' ports = 1/8" B.S.P.

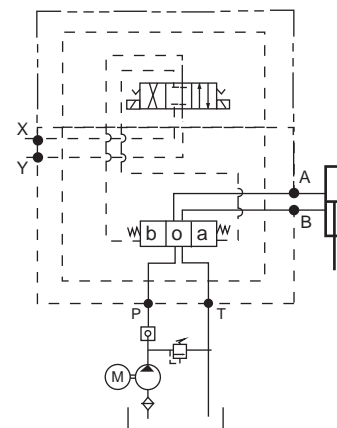


Dimensions:

Side entry; P & T, A & B, X & Y ports.



Typical schematic:



Model code

FT-MB10	XY	S
----------------	-----------	----------

Product type

Port size:

P,T = 3/4" BSP
A,B = 3/4" BSP
X,Y = 1/8" BSP

Manifold material:

A = Aluminum
S = steel