

Bar Manifold D03 (Size 6) Parallel Circuit High Flow

BM6PH	- XX /		2
-------	--------	--	---

Revision

= XX

Number of Station

= 01-10

Material

Aluminum 6061-T6, 3000 psi

= A

Carbon Steel 45#, 5800 psi

= S

12 =

01 =

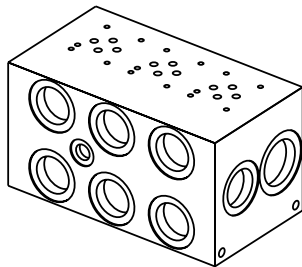
2 =

Ports

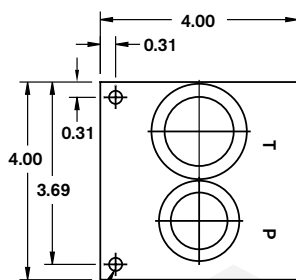
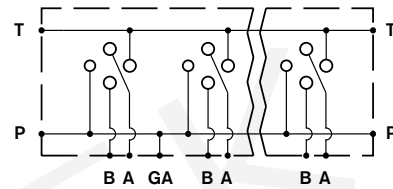
SAE Threaded Ports

BSPP Threaded Ports

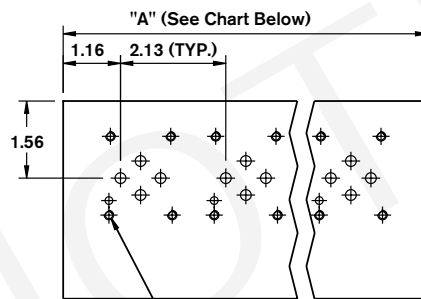
Valve Spacing 2.13"



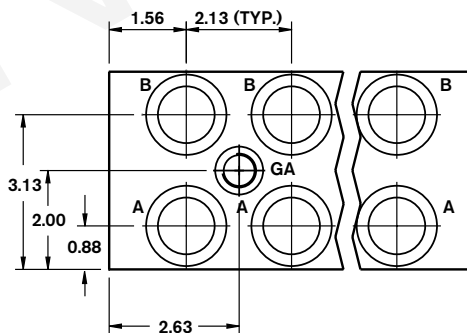
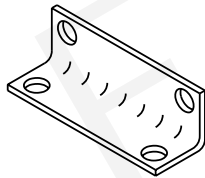
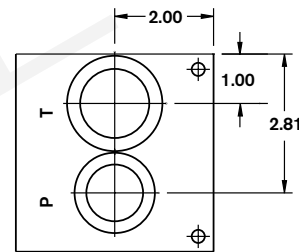
Parallel Circuit



See Chart Below



See Chart Below



T Port	A, B, & P Ports	GA Port	Manifold (Mtg.)	Valve (Mtg.)	
...12	1-5/16-12 SAE-16	1-1/16-12 SAE-12	9/16-18 SAE-6	5/16-18 x 0.45 DP.	10-24 x 0.50 DP.
...01	1" BSPP	3/4" BSPP	1/4" BSPP	M8 x 0.45 DP.	M5 x 0.50 DP.

Number of Stations	01 ²	02	03	04	05	06	07	08	09 - 10
Dim. "A"	3.13	5.25	7.38	9.50	11.63	13.75	15.88	18.00	Consult Factory
Approx. Weight AL (lbs)	5	8	12	15	18	22	25	28	
Approx. Weight DI (lbs)	13	18	31	40	48	57	66	75	

1) Blackening 2) Gauge port not included

All dimensions in inches