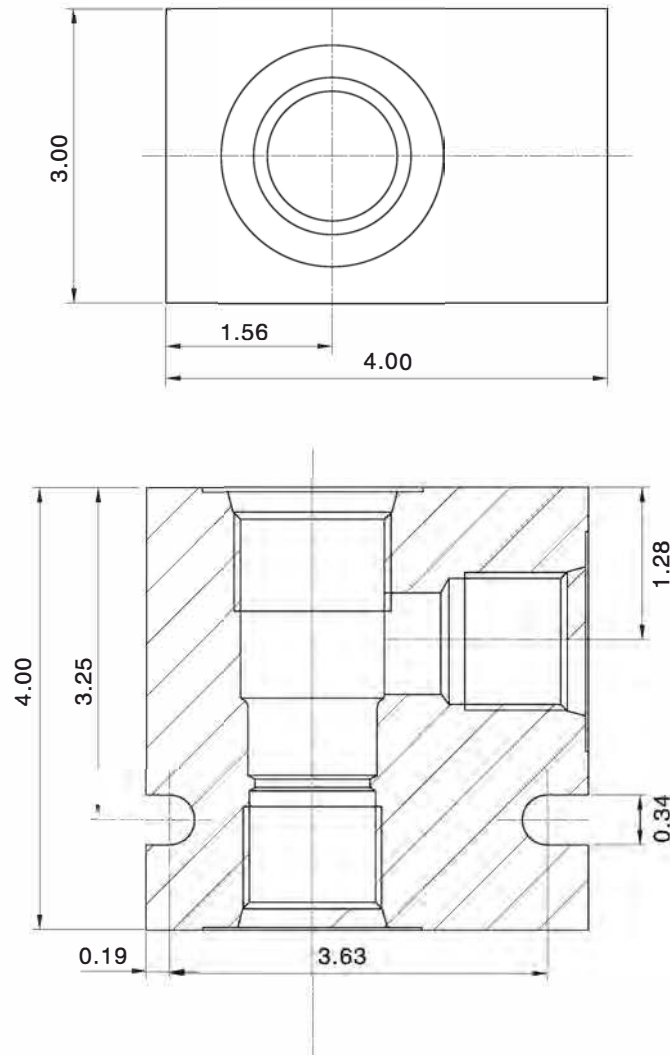


Cartridge Valve Housing



Series 20 2-Way Valve Housing

2-WAY
Aluminium



Unit=Inches

SERIES 20 2-WAY HOUSINGS			
Part No.	Material	Operating Pressure	Ports
FT20-2-A-16T	Aluminum 6061-T6	210 bar (3000 psi)	SAE 16
FT20-2-A-20T	Aluminum 6061-T6	210 bar (3000 psi)	SAE 20
FT20-2-S-16T	Steel	350 bar (5000 psi)	SAE 16
FT20-2-S-20T	Steel	350 bar (5000 psi)	SAE 20