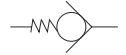


型号 S 系列单向阀作用为使油液向一个方向流动，另一方向止流。

特性:

1. 连接方式为管式和板式
2. 各种开启压力可选



Model S series are direct operated check valves, which for leak free closure in a check direction.

Characteristic:

1. Threaded connection
2. Different opening pressure available

S 10 A 1 / *

口径 Size: 6, 8, 10, 15, 20, 25, 30

A = 管式连接 A = Threaded connections

Further details 其它文字说明

No code = Inch thread 无标记 = 英制螺纹
2 = Metric thread 2 = 公制螺纹

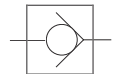
0 = Without spring 0 = 无弹簧
1 = Opening pressure 0.05 MPa 1 = 开启压力 0.05 MPa
2 = Opening pressure 0.15 MPa 2 = 开启压力 0.15 MPa
3 = Opening pressure 0.30 MPa 3 = 开启压力 0.30 MPa
5 = Opening pressure 0.50 MPa 5 = 开启压力 0.50 MPa

General information 基本参数		6	8	10	15	20	25	30
口径 Size		6	8	10	15	20	25	30
螺纹连接 Threaded Connections	英制螺纹 Inch (BSP)	G1/4	G3/8	G1/2	G3/4	G1	G1 1/4	G1 1/2
	公制螺纹 Metric	M14x1.5	M18x1.5	M22x1.5	M27x2	M33x2	M42x2	M48x2
流量 Flow Rate (L/min)		15	30	50	120	200	300	400
工作压力 Max. Operating Pressure (MPa)		31.5						
总长 Overall Length (mm)		58	58	72	85	98	120	132
对边 Hexagon Socket Nut (mm)		19	24	30	36	46	60	65

型号RVP系列作用为使油液向一个方向流动，反向则止流。

特性:

1. 底板式安装型式
2. 单向使油液流动



Model RVP series are direct operated check valves by a manifold mounting.

Characteristic:

1. Leak free closure in one direction
2. For manifold assembly
3. Different opening pressure available

RV P 10

板式Subplate mounting

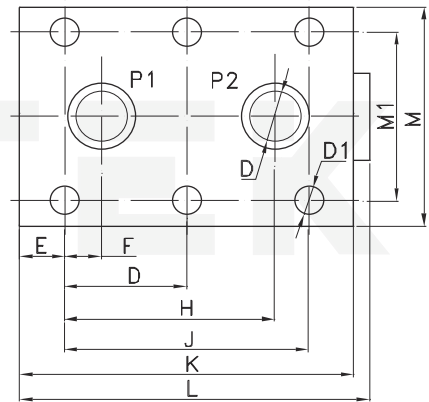
口径 Size: 6, 8, 10, 12, 16, 20, 25, 30,

1X / *

Further details 其它文字说明

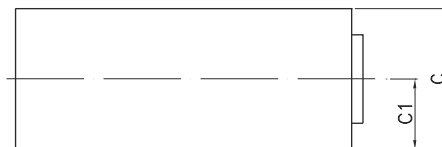
Series no. 系列号

General information 基本参数		6	8	10	12	16	20	25	30	40
口径 Size		6	8	10	12	16	20	25	30	40
流量 Flow Rate (L/min)		15	30	50	80	100	200	300	380	460
开启压力 Opening Pressure (MPa)		0.05								
工作压力 Max. Operating Pressure (MPa)		31.5								



RVP Installation dimensions

安装尺寸



Size 口径	M	M1	L	K	J	H	D	F	E	C1	C	D	D1
RVP6	41.5	28.5	43	41.5	19	17.6	-	1.6	6.4	8	16	2x φ 5	4xM6
RVP8	46	33.5	65	63.5	35	30	-	4.5	14.2	10	20	2x φ 7	4xM6
RVP10	51	38	72	70	33.5	29.5	-	4	18	12.5	25	2x φ 10	4xM6
RVP12	57.5	44.5	84	80	38	34	-	4	21	16	32	2x φ 13	4xM6
RVP16	70	54	107	104	76	65.4	38	11.4	14	22.5	45	2x φ 17	6xM8
RVP20	76.5	60	131	127	95	76	47.5	19	16	25	50	2x φ 22	6xM8
RVP25	100	76	169	165	120	100.1	60	20.6	15	27.5	55	2x φ 28.5	6xM10
RVP30	115	92	190	186	143	118.8	71.5	23.8	15	37.5	75	2x φ 35	6xM12
RVP40	140	111	196	192	133.5	114.5	67	25.5	16	50	100	2x φ 47.5	6xM12